

# Apartment buildings near St. Moritz

Champfèr, CH



## Project details

Client	Private
Architecture	Diener & Diener Architekten AG , HTS Architekten + Partner AG
Project type	Residential construction apartment building
Construction type	Wood element construction
Services	Timber construction
Construction	2007
Locality	Champfèr
Country	Switzerland

## System construction enables rapid completion

The challenge was to deliver two apartment buildings with high standards in terms of room acoustics and sound insulation based on a cost-efficient construction. Our solution comprised a timber system construction with a high degree of prefabrication. Following a construction period of just four months, we delivered a modern residential development in a fantastic location in the mountains with a very special facade. We took a leading role in the project in collaboration with partners from the Engadin region on the order of Basel-based architecture firm Diener & Diener.

## Specific Contact



**Marco Gemperle**

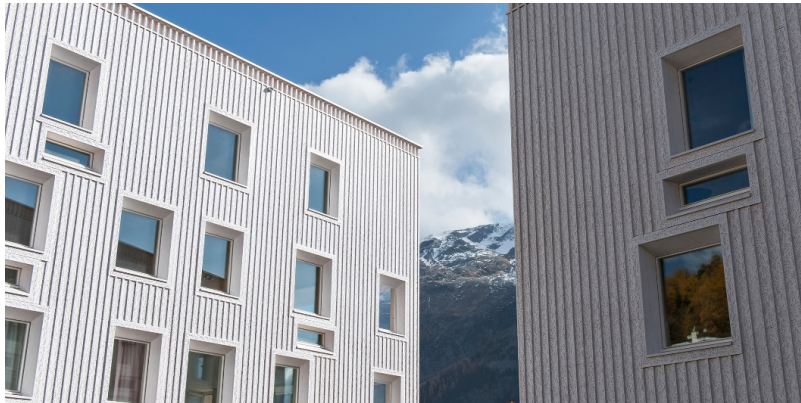
Sales Residential Construction | Timber  
Construction | Switzerland

T +41 71 388 58 55

[marco.gemperle@blumer-lehmann.com](mailto:marco.gemperle@blumer-lehmann.com)

# Apartment buildings near St. Moritz

Champfèr, CH



Clear contours



Ornamentation on the facade is also visible inside



Close-up of the facade with milled ornamentation

Rustic interior in larch