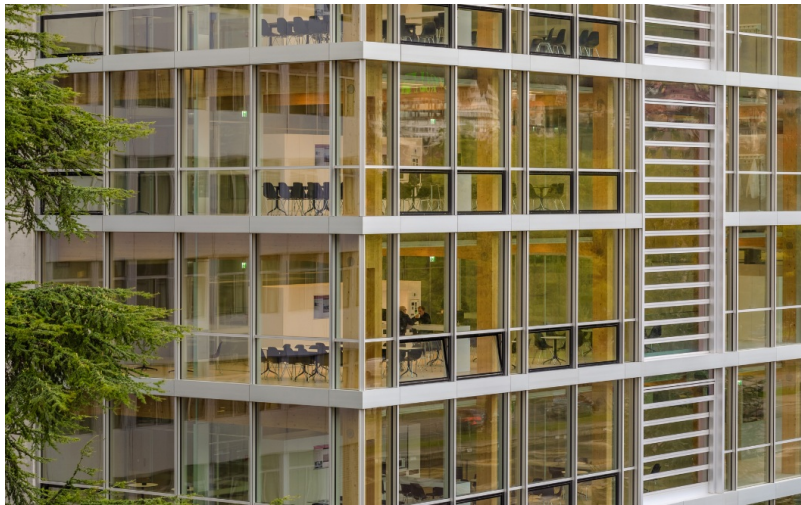


# Omega: timber build for production and offices

Biel, CH



## Project details

Client	Swatch
Architecture	Shigeru Ban Architects
Project type	Commercial and industrial, Office and administration
Construction type	Wood element construction
Services	Timber construction
Construction	2017
Locality	Biel
Country	Switzerland

## Omega production building with precisely scheduled timber construction

The new Omega premises in Biel are nothing less than the most advanced facility for watchmaking, training and quality control that the watch industry has to offer. The masterpiece was designed by award-winning Japanese architect Shigeru Ban.

At a length of 70 metres, a width of 30 metres and a height of 30 metres, the dimensions of the new production and logistics building on the western Omega site are remarkable. The five-storey structure was designed to meet the highest standards in energy efficiency and environmental friendliness. This included the creation of a special climate and energy concept. What's more, all timber used in the construction came from Swiss forests. Blumer-Lehmann AG was responsible for the planning, production and assembly of the timber structure.

## Specific Contact



**Richard Jussel**

Project Development | Sales – Industrial Buildings | Timber and Modular Construction | Switzerland

T +41 71 388 58 61

[richard.jussel@blumer-lehmann.com](mailto:richard.jussel@blumer-lehmann.com)

# Omega: timber build for production and offices

Biel, CH



Modern production facilities



View of the timber skeleton frame

