

# Suttero energy plant with timber frame walls

St. Gallen, CH



## Project details

Client	Ernst Sutter AG
Architecture	Stefano Martinetti /Ernst Sutter AG
Project type	Commercial and industrial
Construction type	Wood element construction
Services	Timber construction
Construction	2019
Locality	Gossau
Country	Switzerland

## 'Sunscreen for wood' protects the energy plant's facade

The dimensions of this new building alone are striking. The four-storey hybrid construction is built in a solid, steel construction with wooden-frame outer walls and has a building volume of almost 6,000 m<sup>3</sup>. We were commissioned by the client Ernst Sutter AG to take on responsibility for the entire timber construction.

In the combustion chamber of the new energy plant, untreated wood chips are incinerated to produce hot water that supplies several industrial firms with heat via a district heating grid. The new building that houses the modern, carbon-neutral wood chip burner is four stories high and comprises a 1,000 m<sup>3</sup> wood chip store, underground garage and an engineering room in addition to the burner. The facade is of particular importance to us. We first treated the spruce with the newly developed UVood 'sunscreen' for wood, which prevents weathering.

Two different treatments applied to the same facade demonstrate the effect of the timber sunscreen: a vertical facade with rough-cut, pre-greyled, tongue-and-groove boarding was used for the upper section. The rest of the facade is finished with the innovative UVood surface treatment that protects the wood from UV radiation, preserving its colour, smell and feel. The striking 'CO<sub>2</sub> neutral' logo, which we designed, milled and installed on the facade for all to see, is eye catching.

## Specific Contact



### Markus Rutz

Division Manager Timber and Modular  
Construction | CH  
Member of the Executive Board

T +41 71 388 58 40

[markus.rutz@blumer-lehmann.com](mailto:markus.rutz@blumer-lehmann.com)

# Suttero energy plant with timber frame walls

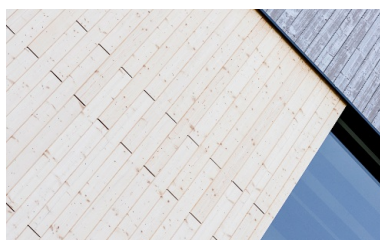
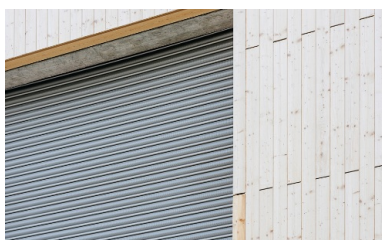
St. Gallen, CH



The energy plant with timber facade in two different treatments.



Visibly different: pre-greyed wood in the upper section and UV-treated wood below.



In focus: the vertical facade with weather protection.

Precision work on the facade in different designs.

# Suttero energy plant with timber frame walls

St. Gallen, CH



Simple timber facade with effective elements.



The UWood-treated facade compared side by side with several natural facade boards.